

# AIR CHIEF

CAR RADIO DIVISION, RADIO CORPORATION PTY. LTD.  
1090-1140 Centre Road, Clayton - Phone 544 2444

Holden: 20A  
File: Holden  
Date: 22-5-72

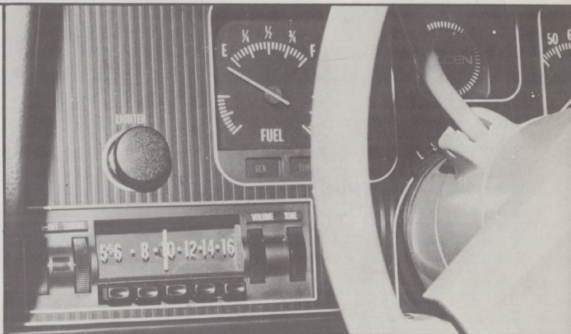
Revised May 1972

## INSTALLATION INSTRUCTIONS for fitting AIRCHIEF CAR RADIO RECEIVERS into the HOLDEN MODEL HQ

|  |                             |                         |
|--|-----------------------------|-------------------------|
| CW421 GM-H Radio Package (PN-C20AE)                          | - 11 Transistor, Pushbutton | - GM-H Part No. 2815951 |
| CW422 GM-H Radio Package (MN-C20AE)                          | - 11 Transistor, Manual     | - GM-H Part No. 2815817 |
| Top-Mount Antenna (factory-fitted with above)                |                             | - GM-H Part No. 2824959 |
| CW709 NASCO Radio Package (PN-C27AE)                         | - 13 Transistor, Pushbutton | - GM-H Part No. 2819838 |
| CW423 NASCO Radio Package (PN-C20AE)                         | - 11 Transistor, Pushbutton | - GM-H Part No. 2818738 |
| CW424 NASCO Radio Package (MN-C20AE)                         | - 11 Transistor, Manual     | - GM-H Part No. 2818737 |
| CW221 NASCO Radio Package (MN-C29AE)                         | - 8 Transistor, Manual      | - GM-H Part No. 2819839 |
| Antenna (included in NASCO Radio Packages):                  |                             |                         |
| Lock-Down Deluxe type (supplied with 13-transistor receiver) |                             | - Part No. 4074-175-02  |
| Lock-Down type (supplied with 11-transistor receiver)        |                             | - Part No. 4074-174-02  |
| Top Mount type (supplied with 8-transistor receiver)         |                             | - Part No. 4074-154-02  |

### Options :

|   |                         |
|---|-------------------------|
| 7296-114-01 Rear Speaker and Fader Control Package  | - GM-H Part No. 2818739 |
| 4074-144-04 Motorised Antenna Package - rear mount  | - GM-H Part No. 2823972 |
| 4074-145-51 Motorised Antenna Package - front mount | - GM-H Part No. M36746  |



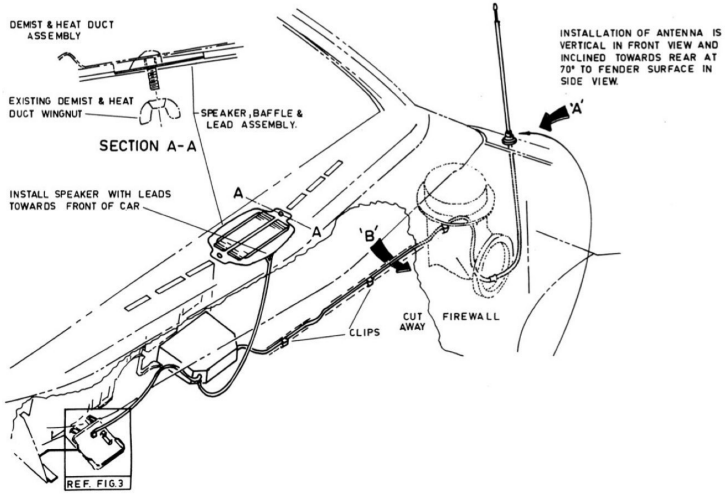
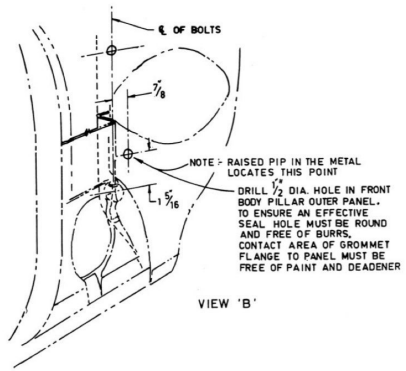
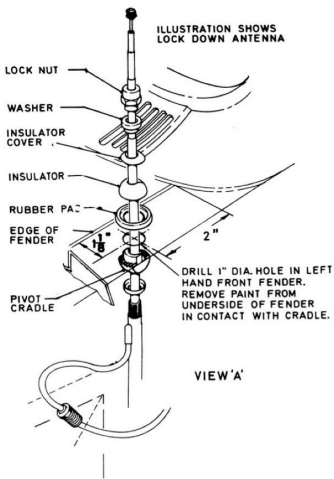


FIG. 1

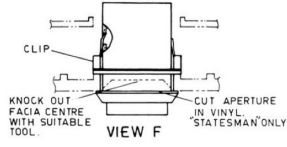
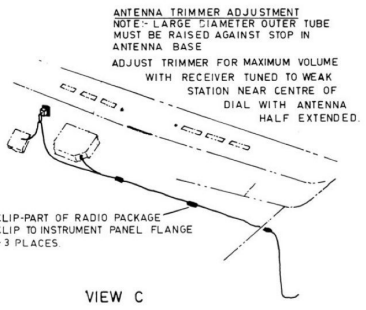
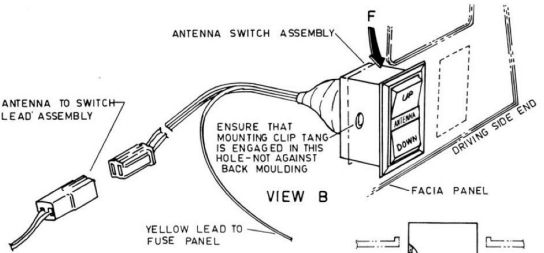
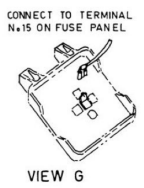
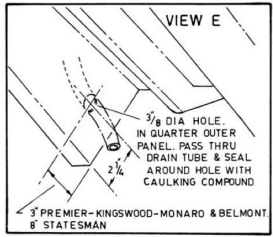
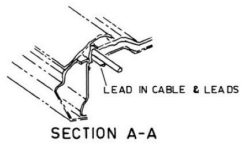
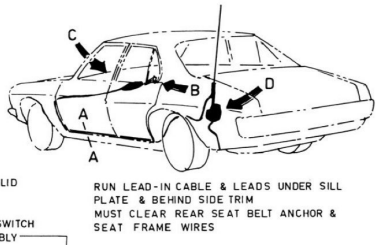
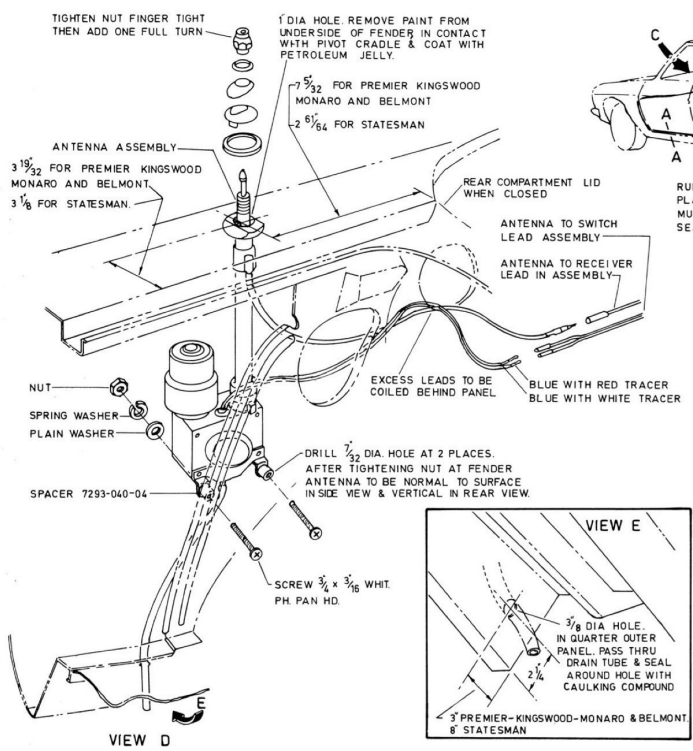
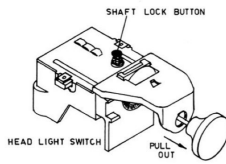
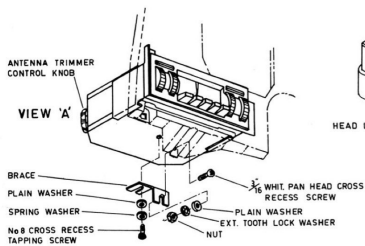
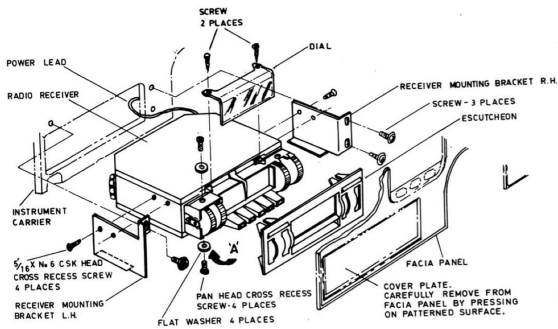


FIG. 6



PULL LIGHT SWITCH SHAFT OUT TO HEAD LAMP ON POSITION. PRESS LOCK BUTTON INWARD THEN PULL SHAFT OUT OF SWITCH

FIG. 2

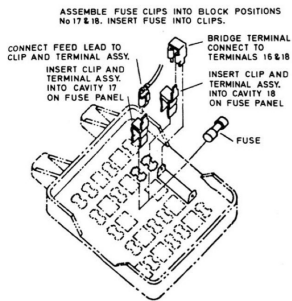
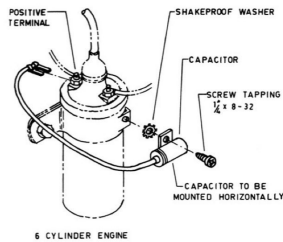
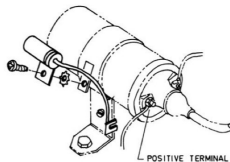


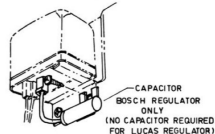
FIG. 3



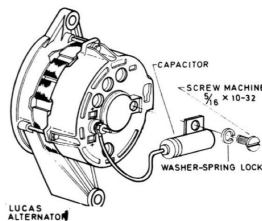
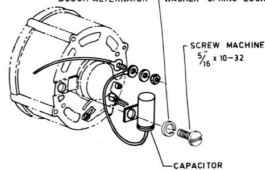
6 CYLINDER ENGINE



V8 ENGINE



BOSCH ALTERNATOR



LUCAS ALTERNATOR

FIG. 4

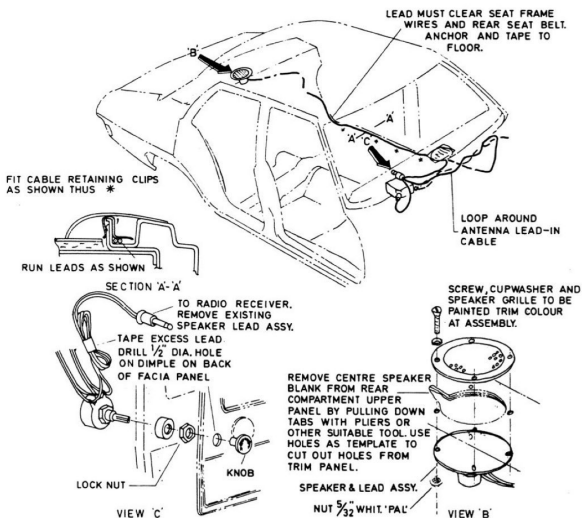


FIG. 5

#### INSTALLATION PROCEDURE

**WARNING:** Battery lead of these receivers must be connected only to the POSITIVE terminal of a battery. Connection to incorrect polarity will damage the receiver.  
DISCONNECT LEADS FROM CAR BATTERY BEFORE COMMENCING INSTALLATION.

1. **ANTENNA** - Fig. 1.
  - Install antenna and lead-in cable as shown. If a rear-mount antenna is being fitted, refer to Fig. 6.
2. **SPEAKER** - Fig. 1.
  - Fasten speaker and baffle assembly to panel with existing wing nuts.
3. **RECEIVER** - Fig. 2 and Fig. 3.
  - Remove closure panel from beneath instrument panel (six screws).
  - Remove shaft from headlight switch.
  - Remove cigar lighter from socket.
  - Remove facia panel from instrument panel (four screws at base).
  - Carefully tap out radio aperture cover plate.
  - Fit receiver as shown.

**NOTE:** If applicable, carry out Item 6 and/or Item 7 before replacing instrument panel facia.
4. **INTERFERENCE SUPPRESSION** - Fig. 4.
  - Fit capacitors as shown.
5. **ANTENNA TRIMMER ADJUSTMENT**

It is MOST IMPORTANT that the antenna trimmer at the rear left corner of the receiver be adjusted at conclusion of installation.
6. **ADDITIONAL SPEAKER** (optional) - Fig. 5.
  - Fit rear speaker and fader control as shown.
7. **MOTORISED ANTENNA** (optional) - Fig. 6.
  - Fit motorised antenna and antenna control switch as shown.

SCHEDULE OF PARTS REQUIRED FOR INSTALLATIONCOMPONENT PACKAGES

|             |  |
|-------------|--|
| 7001-129-01 | Component Package A<br>contains:                                   |
| 4009-045-36 | Capacitor (1) 0.5 $\mu$ F regulator by-pass,<br>G.M.H. No. 7428361 |
| 7001-129-07 | Component Package B<br>contains:                                   |
| 7244-050-01 | Terminal bridge (1) G.M.H. No. 7426915                             |
| 7055-598-01 | Clip and terminal assy. (2) G.M.H. No. 2814603                     |
| 4071-010-02 | Fuse (1) 3 amp, G.M.H. No. 9426541                                 |
| 7055-291-51 | Clip (3) lead anchor, G.M.H. No. SP-1864                           |
| 7209-527-02 | Screw (3) 1/2" x 10-24 Phillips pan hd                             |
| 7001-129-04 | Component Package C<br>contains:                                   |
| 4009-045-43 | Capacitor (1) 0.5 $\mu$ F alternator by-pass<br>G.M.H. No. 7437337 |
| 4009-045-08 | Capacitor (1) 0.5 $\mu$ F coil by-pass, G.M.H. No. 7428362         |
| 7200-078-11 | Screw (1) 5/16" x 10-32 ch. hd, G.M.H. No. SP-1679                 |
| 7266-012-22 | Washer (1) No. 10 spring, G.M.H. No. 120217                        |
| 7209-522-11 | Screw (1) 1/4" x 8-32 Phillips hd, G.M.H. No. 449809               |
| 7262-012-02 | Washer (1) shakeproof, 3/16" int., G.M.H. No. 121752               |
| 7001-129-08 | Component Package D<br>contains:                                   |
| 7028-918-02 | Brace (1) base of receiver   |
| 7201-579-28 | Screw (1) 3/8" x No. 8 Phillips pan hd,<br>G.M.H. No. 9414711      |
| 7261-164-02 | Washer (1) flat steel, 9/16" x 11/64",<br>G.M.H. No. SP-1860       |
| 7266-012-22 | Washer (1) No. 8 spring, G.M.H. No. 121841                         |
| 7028-919-02 | Bracket (1) driving side   |
| 7028-920-02 | Bracket (1) passenger side   |
| 7201-527-22 | Screw (4) 5/16" x No. 6 Phillips csk hd                            |
| 7198-579-10 | Screw (1) 1/2" x 3/16" Whit. Phillips pan hd                       |
| 7261-218-04 | Washer (1) flat steel, 9/16" x 13/64"                              |
| 7262-512-02 | Washer (1) shakeproof, 3/16" ext.                                  |
| 7148-104-11 | Nut (1) 3/16" Whit.  |

SPEAKER AND SPEAKER MOUNTING COMPONENTS

|             |  |
|-------------|--|
| 7296-105-01 | Speaker and baffle assembly (1)<br>includes: |
| 4056-004-18 | Speaker (1) 9" x 6" lantor covered           |
| 7009-170-02 | Baffle assembly (1)                          |
| 7310-015-01 | Nut (4) 5/32" Whit. PAL type                 |
| 4077-174-02 | Lead assembly (1)<br>includes:               |
| 7171-015-01 | Plug (1)                                     |
| 7244-034-01 | Terminal (2)                                 |
| 1171-023-66 | Lead - 24" required                          |

COMPONENTS SUPPLIED WITH RECEIVER

|             |   |
|-------------|---|
| 7244-064-01 | Terminal (1) power lead G.M.H. No. 2965276                  |
| 7173-056-03 | Pointer (1)   |
| 4068-020-01 | Lamp (1) 12 volt, 1.2W, capless with leads                  |
| 7055-566-01 | Clip (1) lamp mount   |
| 7201-526-16 | Screw (2) 5/8" x No. 4 Phillips csk hd - dial mount         |
| 7005-090-21 | Dial Background - 13 transistor                             |
| 7005-090-11 | Dial Background - 11 transistor                             |
| 7005-090-01 | Dial Background - 8 transistor                              |
| 7070-133-03 | Dial (1) numerical  |
| 7084-361-01 | Escutcheon (1) pushbutton                                   |
| 7084-361-51 | Escutcheon (1) manual                                       |
| 7201-577-07 | Screw (4) 1/2" x No. 6 Phillip pan hd - escutcheon<br>mount |
| 7261-142-04 | Washer (4) escutcheon mount                                 |
| 7008-417-05 | Metallic label (1) AIRCHIEF THIRTEEN                        |
| 7008-417-04 | Metallic label (1) AIRCHIEF ELEVEN                          |
| 7008-417-03 | Metallic label (1) AIRCHIEF EIGHT                           |

OPTIONAL DIALS

|             |                                   |
|-------------|-----------------------------------|
| 7070-133-02 | All State                         |
| 7070-133-04 | New South Wales                   |
| 7070-133-05 | Victoria/Tasmania                 |
| 7070-133-06 | Queensland/Northern Territory     |
| 7070-133-07 | Western Australia/South Australia |